

Mrs. Katz's Newsletter

11/28 to 12/2

American Literature

Monday

- ✓ Due: Chs. 21-22, w/s
- *The Scarlet Letter*
 - Critical Reading Check
 - Discussion
- Vocab Lesson 6
- ❖ HW: Finish Book, w/s

Tuesday

- ✓ Due: w/s
- *The Scarlet Letter*
 - Discussion
 - Critical Reading
- ❖ HW: 6A,C

Wednesday

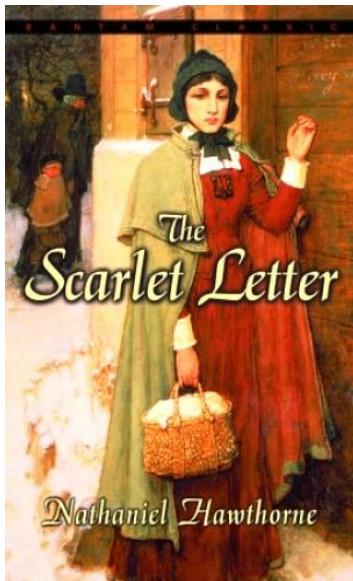
- ✓ Due: 6A,C
- *The Scarlet Letter*
 - Discussion
- ❖ HW: Study

Thursday

- ✓ Due:
- *The Scarlet Letter*
 - Writing on Demand
- ❖ HW: Study

Friday

- ✓ Due:
- *The Scarlet Letter*
 - Test
- ❖ HW:



British Literature

Monday

- ✓ Due:
- *Hamlet*
 - Act 2, sc 1,2
- Vocab Lesson 6
- ❖ HW:

Tuesday

- ✓ Due:
- *Hamlet*
 - Act 2, sc 2
- ❖ HW: 6A, C, Assign. #1

Wednesday

- ✓ Due: 6A, C, Assign. #1
- *Hamlet*
 - Act 3, sc 1,2
- ❖ HW:

Thursday

- ✓ Due:
- *Hamlet*
 - Act 3, sc 3,4
 - Assignment #2
- ❖ HW: Assignment #2

Friday

- ✓ Due: Assignment #2
- *Hamlet*
 - Act 4, sc 1-4
- ❖ HW:



World Literature

Monday

- ✓ Due:
- Shakespeare Search
- ❖ HW: Shakespeare Search

Tuesday

- ✓ Due: Shakespeare Search
- Shakespeare Notes
- Vocab Lesson 6
- ❖ HW: 6A, C

Wednesday

- ✓ Due:
- *Merchant of Venice*
 - Act 1, sc 1,2
- ❖ HW:

Thursday

- ✓ Due: 6A, C
- *Merchant of Venice*
 - Act 1, sc 3
 - Assignment #1
- ❖ HW: #1

Friday

- ✓ Due: #1
- *Merchant of Venice*
 - Act 2, sc 1,2
 - Assignment #3
- ❖ HW: Assignment #3



Western Literature

Monday

- ✓ Due:
- *Sir Gawain and the Green Knight*
 - Fitt 2 Finish
 - Assignment #2
- ❖ HW: #2, 5B,D

Tuesday

- ✓ Due: #2, 5B,D
- *Sir Gawain and the Green Knight*
 - Fitt 3
- ❖ HW: 5A, C

Wednesday

- ✓ Due:
- *Sir Gawain and the Green Knight*
 - Fitt 3
- ❖ HW: Voc 5 w/s

Thursday

- ✓ Due: Voc 5 w/s
- Vocab 5 Quiz
- *Sir Gawain and the Green Knight*
 - Fitt 3
- ❖ HW:

Friday

- ✓ Due:
- *Sir Gawain and the Green Knight*
 - Fitt 4
- ❖ HW:

8th Grade Language Arts

Monday

- ✓ Due:
- Vocab Lesson 6
- *A Christmas Carol* Beginnings
- ❖ HW:

Tuesday

- ✓ Due:
- Character Types (lecture/handout)
- *A Christmas Carol*
 - Stave 1 Begin
- ❖ HW:

Wednesday

- ✓ Due: 6A,B,C
- *A Christmas Carol*
 - Stave 1 Finish
- ❖ HW:

Thursday

- ✓ Due:
- *A Christmas Carol*
 - Stave 2 Begin

❖ HW:

Friday

- ✓ Due:
- *A Christmas Carol*
 - Stave 2 Finish
- ❖ HW: Flashcards